



EVERGREEN NEWCOMERS  
AND NEIGHBORS  
PO BOX 2197  
EVERGREEN CO 80437  
Kathrin Schroeter, Newsletter Editor

### Upcoming Events:

December 16: Happy Hour at “Wild Game Entertainment”, 1204 Bergen Parkway, Evergreen

January 10: Winter Gala at Hiwan Golf Club

January 20: Happy Hour at “Chart House Restaurant”, 25908 Genesee Trail Road, Golden

### In this issue:

|                     |       |
|---------------------|-------|
| Gala Invitation     | p. 2  |
| President’s Message | p. 3  |
| Activities Update   | p. 5  |
| ENN Board Photos    | p. 6  |
| Wood Drive          | p. 7  |
| Happy Hours         | p. 10 |
| New Members         | p. 11 |
| Evergreen Speaks!   | p. 12 |
| Activities          | p. 13 |
| Board of Directors  | p. 27 |
| Activity Groups     | p. 28 |

Next Newsletter Deadline:  
December 20th for Group Recaps  
and January/February  
Newsletter information.

*Where Fun and Friendships Happen*

## **WINTER GALA!**

On January 10, 2026 we will all gather together for our annual Winter Gala, where even more fun and friendship happen. Besides great food, drinks and entertainment of course!

The Gala will again be held at the Hiwan Golf Club - PLEASE READ INVITATION ON PAGE 2!

[www.evergreennewcomers.com](http://www.evergreennewcomers.com)

[www.facebook.com/groups/EvergreenNNC](https://www.facebook.com/groups/EvergreenNNC)

# Winter Gala

SATURDAY JANUARY 10, 2026

5:30 TO 10:00 PM

Hiwan Golf Club

PLEASE RSVP BY DECEMBER 29, 2025  
SEATING IS LIMITED



Line Dance Instructor  
Treena McCurdy



Comedian  
Nancy Norton

Winter parties are a tradition at ENN and we are confident this year's version will be among the best.

- Enjoy a sit-down dinner with your friends at Hiwan Golf Club — also an ENN tradition.
- Be entertained by our headliner, Nancy Norton, a high-energy, award-winning comedian. Nancy performs on USO tours and is a keynote speaker and registered nurse.
- Then get up and do some line dancing. Don't know how? Treena McCurdy of Line Dance Evergreen will show us how! Treena is from New Zealand and teaches dance weekly here in Evergreen.
- Returning to the Gala is Donner's DJ who will be there until 10pm, so there's lots of time for more dancing and music requests.

Click [HERE](#) to make your reservation or click [HERE](#) for more details. Send Mike an email to [president@evergreennewcomers.com](mailto:president@evergreennewcomers.com) if you want to reserve your own table of 10 friends, or for other seating options.

**Pull out your party clothes and join us for a fun-filled post-holiday extravaganza!**

## **President's Message**

From Mike Ferrari



Hello fellow newcomers and neighbors!

Congratulations to Rebecca Balentine and all our volunteers for accomplishing our most successful firewood drive to date! None of our neighbors should go without heat this winter.

**Now on to the Winter Gala! We have lots more entertainment this year with comedian Nancy Norton, line-dancing instructor Treena McCurdy, and dance music from Donner's DJ. As we did last year, you can reserve a table of 10 simply by letting me know at [president@evergreennewcomers.com](mailto:president@evergreennewcomers.com). Have your activity group reserve a table**

**and sit with your friends! Please join me at Hiwan for our signature event. I promise good food, good music, and good fun.**

As our renewal season comes to a close, I wanted to say a few words about our payment system, Cheddar Up. For many of you the name "Cheddar Up" is synonymous with "over complicated", "too techie", or something even more pejorative. We hear you, loud and clear. We have been working with Cheddar Up for the past 3 months to simplify the membership and renewal form. I am pleased to say that the much-simplified, more-intuitive system is now live on the membership page of our website, [www.evergreennewcomers.com](http://www.evergreennewcomers.com).

Why do we need a payment system at all? Most members these days want to pay with credit cards and that information needs to be transmitted securely to the credit card companies without our seeing or storing that information offline.

Our payment system also stores the liability waivers that you sign. ENN is a virtual organization with no headquarters, file cabinets, or storage facilities. Any physical

documents and signage we own sit in cardboard boxes in various board member closets. This is not a reliable way to maintain financial and legal records. Nearly all of our legal documents (meeting minutes, financial reports, membership records, and liability waiver forms) are now digital and backed up with redundancy on secure but easily accessible hard drives and in cloud storage. We're not at 100% yet, but we're getting there.

Why Cheddar Up? Cheddar Up is a cost-effective system for us as well as for many other nonprofits. The payment part of it is quite reliable and stable, even if the entry screens can be unintuitive at times. Building a customized payment system ourselves is simply out of the question from a financial point of view. What we can do is to listen to your comments about where in the process you are getting stuck, and fixing it. That is why your honest feedback is important and helpful.

Email me if you have any questions about Cheddar Up or the Gala. I'm listening.  
[president@evergreennewcomers.com](mailto:president@evergreennewcomers.com)

*Mike*

Photo from the Shutterbugs (more in the 2<sup>nd</sup> part of the Newsletter!):



## ACTIVITIES UPDATE

### FEEDBACK WANTED ON NEW GROUPS!

#### New Groups Suggested at Open House:

If you attended our Open House in August, you probably noticed the Suggestion Board in the middle of the room. You may have even suggested new ENN Activity Groups! Below are the groups suggested. We'd like to hear from you which groups you would join and what format/details you prefer, so we can get them started!

- RV Group
- Writing Group
- Art Group (Art lovers? Creators?)
- Cooking Fast, Healthy Meals
- High-Altitude Baking
- Rummikub (Tile game combining elements of Rummy and Mahjong)
- Investment Group (educational on topics like crypto, not a group to pool money to invest)
- International Travel (re-starting this group, perhaps different format)
- LGBT+ (Group Activities?)
- Dinner/Cooking Group (Meal Progression)
- Music Group (Eras? Genre?)
- Dance Lessons (At a studio? Genre/Era?)
- A Friday-Night Wine Group

If you would participate in any of these groups or you're willing to help lead them, please contact Chris Schmenk! We'll get the groups started!

Easy Walkers Co-Leader Sought: We are re-starting the Easy Walkers group and need a co-leader! We have a great group of people who want to walk weekly, and we have one member willing to co-lead the group. However, we need another to get the group started. If you're willing, please email Chris Schmenk at [activities@evergreennewcomers.com](mailto:activities@evergreennewcomers.com).

**If you are ready to join these or any of our ENN groups, please contact Chris Schmenk at: [Activities@evergreennewcomers.com](mailto:Activities@evergreennewcomers.com). She'll get you connected!**

*You will find a complete list of all of our activity groups at the end of the newsletter.*



**THE 2025-2026 ENN BOARD OF DIRECTORS**  
We enjoy serving the club and its members!





## COMMUNITY INVOLVEMENT UPDATE

Rebecca Balentine ~ [Community@Evergreennewcomers.com](mailto:Community@Evergreennewcomers.com)

### 2025 FIREWOOD DRIVE FOR EChO

ENN volunteers and donors did an outstanding job of re-stocking the EChO firewood lot! EChO typically gives out about 80 cords of wood per year. ENN's efforts on September 27th and October 4th resulted in delivery of 18 cords of wood! EChO posted the following thank you on their Facebook site ([EChO Cares](#), October 6, 2025):

*Thank You, Evergreen Newcomers and Neighbors!*

*We are deeply grateful to Evergreen Newcomers and Neighbors for their generous donation of firewood. Your kindness will help our EChO clients keep their homes warm throughout the winter season.*

*Because of community partners like you, families facing challenges can rest a little easier knowing they are cared for and supported. Thank you!*



Just one of a few  
volunteer  
groups...





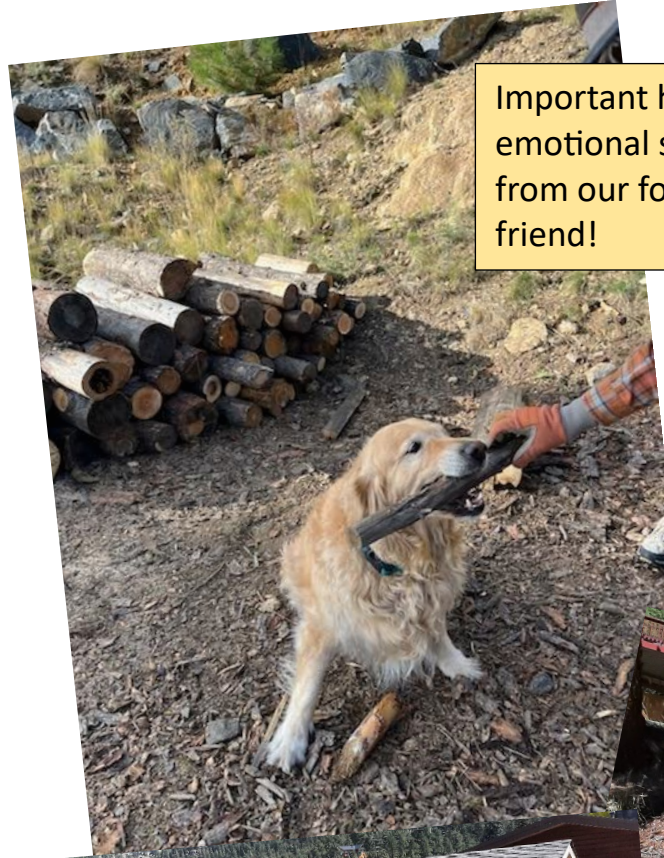
Special thanks to our donors (Brooks, Creed, Dickey, Harding, Harrison, Mazza, Schroeter, Sharp, Wilson) and to our amazing volunteers (Patricia W, Mary E, Carol G, Michael S, Joyce D, Joe R, Katherine H, Mike F, Karen D, Debbie W, Seth W, Rob W, Kathrin S, Tom S, Mike W, Donna L, Mary Beth W, Jason A, Jill M, Chris S, Jan C, Hugh D, Georgia D, Larry T, Kate B, and Wes B)

**Each of you were critical to our success!**

## VOLUNTEER OPPORTUNITIES

**COMING SOON!** Please watch the Community Involvement page on the ENN website (<https://evergreennewcomers.com/community-involvement/>) for a new and updated compendium of local organizations that are actively seeking volunteers. This list will be updated on an on-going basis as additional 501(c)3 organizations looking for assistance are identified. As there are close to 300 non-profits in the Evergreen area, we expect the list to continue to grow!





Important help and emotional support from our four-legged friend!





September 16 at Lariat Lodge



Happy 'Happy Hour' Memories  
(does that make happiness squared?)



September 21 at The Bread  
and Cocktail Lounge –  
Halloween Themed



# Welcome New Members of ENN!

|                    |                 |                   |                 |
|--------------------|-----------------|-------------------|-----------------|
| Kathie Anastas     | Anita Beard     | John Bilgrave     | Lisa Bilgrave   |
| David Carroll      | Melissa Carroll | Will Cassidy      | Lisa Cassidy    |
| Steven Chagnot     | Kim Crawford    | Judith Eissenberg | Eric Ely        |
| Tom Farber         | Jean Freeman    | Bernie Garvey     | Jenifer Garvey  |
| Bill Gaugler       | Jamie Gaugler   | Stephanie Gray    | Mary Haave      |
| Kristine Johansson | Bethanne Lai    | Sharon Lasser     | Tom Martella    |
| Diane Moore        | Samantha Neiman | Judy Page         | Alexander Perez |
| Meredith Perez     | Bob Perkins     | Barb Perkins      | John Romero     |
| Kris Romero        | Nick Sorensen   | Kris Stroemme     | Greta Suneson   |
| Steve Suneson      | Teri Walsh      | Karen Watney      | Gail Young      |

Ski season is coming soon! ENN now has an Ikon, Epic and a new Loveland group. Please contact Chris at [activities@evergreennewcomers.com](mailto:activities@evergreennewcomers.com) if you are interested and would like more information.



**LOVELAND SKI GROUP – MESSAGE FROM LEADER HAP**

I'd like to plan Monday as our group ski day at Loveland Ski area. If a holiday falls on Monday, we will move it to Wednesday that week. Our first ski day will be January 5, 2026. Let's meet at the Bergen Park "Park and Ride Lot" to car pool. Please respond to Hap at [Hap.Bruce@gmail.com](mailto:Hap.Bruce@gmail.com) with any thoughts or questions. I am looking forward to skiing together.

ENN's mission is to provide opportunities for its members to meet others through social events and activity groups. The ENN membership list is only for the personal use of ENN members and may not be used for commercial or non-ENN purposes. All photos displayed in this newsletter were taken by its members and are displayed with their permission.

## **EVERGREEN SPEAKS!**

### **Facilitated by Sergio Mazza**



Have you seen some advertisements lately for a new speakers' series? ENN is sponsoring this new series that will spotlight Evergreen residents who will speak on topics that they are knowledgeable and passionate about.

Presentations follow the TEDx format with short presentations followed by time for questions and discussions. Presentations will be held from 5:30-6:30 p.m. at Evergreen Christian Church, 27772 Iris Drive, Evergreen on the first Tuesday of the second month of each quarter. All presentations are free and open to the public. There is free parking available at the site.



The first presenter in the series was Steve Physioc, an Emmy-award winning broadcaster and play-by-play announcer for MLB, NFL, NBA and NCAA teams. He spoke on "The Power of Unity, Teamwork Wins" to an interested audience on November 4<sup>th</sup>.

Photo courtesy of Steve Physioc



Our next speaker will join us on Tuesday, February 3, 2026. Lynn Caligiuri, Executive Director of the Mountain Area Land Trust (MALT) will be speaking on the importance of land preservation and conservation efforts.

Photo courtesy of MALT

**We hope you can join us as our Evergreen neighbors speak on interesting topics at the next Evergreen Speaks! Invite your friends!**



# A DAY IN THE LIFE OF... (DAYTIME) MAH JONGG GROUP!!!

On Friday, September 12, I visited the daytime Mah Jongg group. Since I had never played this game, I looked up the rules on Wikipedia to be at least somewhat prepared, but was overwhelmed by it. Once with the group, after a warm welcome, Mindy, the group leader, took time to explain the rules to me. Once she mentioned that the game has similar objectives like Rummy, I relaxed and could follow with ease. I had a wonderful time watching these ladies over their shoulders strategize, play, and win. This game can be learned in the group just by watching others; everyone is super friendly and helpful! This ENN group has about 30 members, and on a weekly basis 8 to 12 of them meet to play. The group meets every Friday from 10 am to 12 pm at Congregation Beth in Evergreen and welcomes new members – to include men!



Group leader Mindy explaining to me the intricacies of this game. She started this group 6 years ago when she moved to Evergreen.





Mah Jongg was developed in China in the 19<sup>th</sup> century. It is widely known now in most parts of the world. Different rules exist in Korea, China, Japan and other Asian countries. In the U.S., the National Mah Jongg League issues new rules via yearly hand-outs, so this is a very dynamic game and newcomers as well as experienced players have to learn new rules every year, which gives newcomers an advantage. During the game, you pick and discard tiles and collect runs or sets that are described in the little handouts you see in front of every player.



**The 3 first winners of games – very lucky and very smart ladies: Mindy, Kate, and Vannell**



We are one happy Mah Jongg Group! New members are welcome! We'll teach you if you don't know the game yet. We enjoy conversations, have fun and you could even say that we are actively engaging in "anti-Alzheimer's activity" - we stay sharp and in social contact.



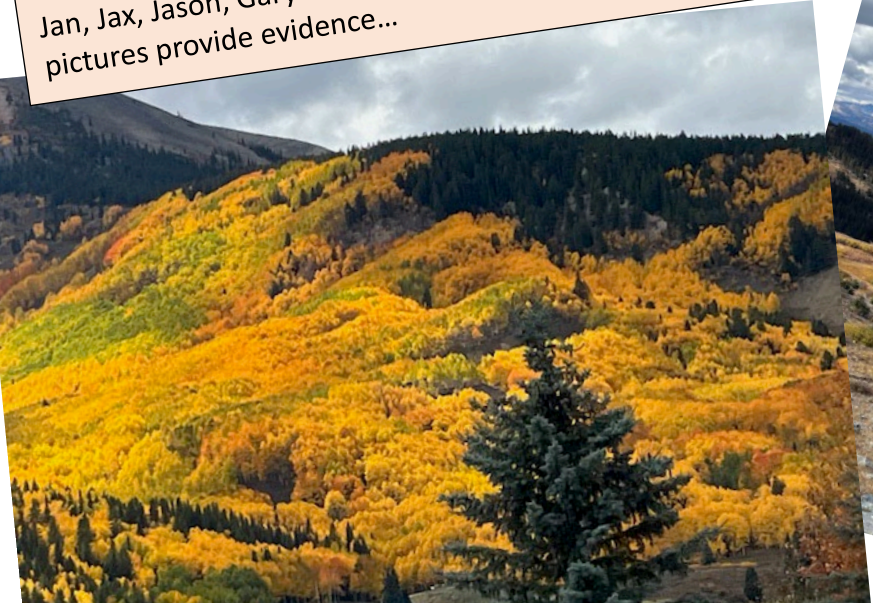
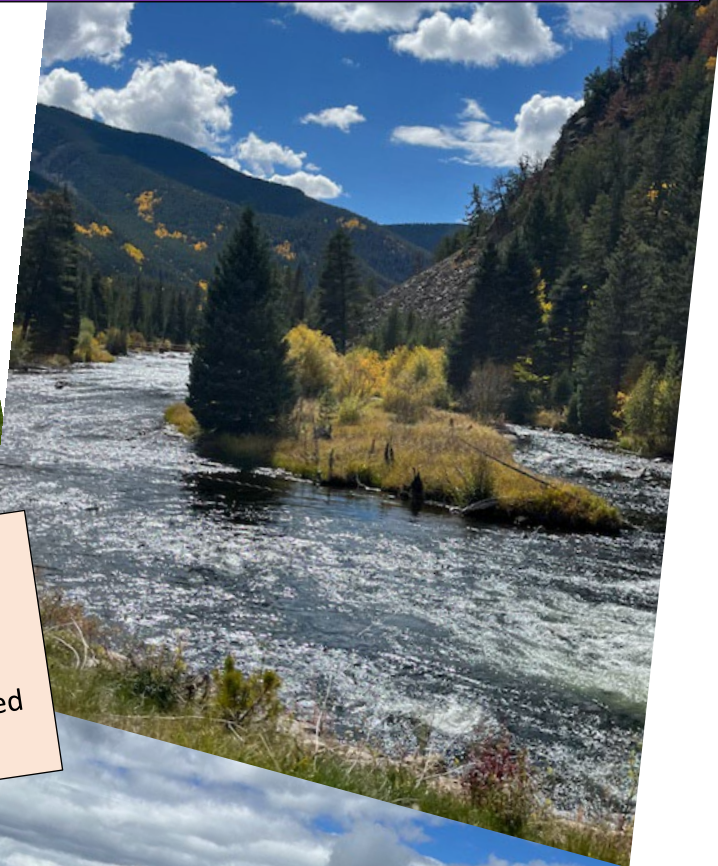
Georgia has been playing Mah Jongg for about 30 years, so she is the 'esteemed elder vintage player of Mah Jongg' of this group! Please note her necklace, a Mah Jongg tile that is very special to her. Georgia collects Mah Jongg sets – and I must say, these sets of tiles really look very beautiful and are very decorative. I think they feel good just holding them!



Mt. Falcon hike with the Mellow Hikers on Saturday, September 20



The ENN Motorcycle Group just completed a two-day ride from Evergreen to Buena Vista, over Cottonwood Pass, to Crested Butte. Seven members on five motorcycles enjoyed absolutely outstanding scenery, including leaf peeping. Participants included Jan, Jax, Jason, Gary and Jerry Beth, and John and Sally. The attached pictures provide evidence...





### **Savvy Women and Gals – SWAG:**

Our September meeting was at EverFIT20, a local business in Bergen Park, where the owner explained how they create full intensity training tailored to you, your goals, your body and your needs. It was quite interesting, and a few members have signed up as a result of this education!

October brought us to the EChO Shelter Program, at the location where the homeless shelter is housed. Tim Clancey, the shelter director, explained how the program works and gave us a tour of the facility. All of our area non-profits are in great need this year, and we need to do all we can to assist. (No photos in the interest of protecting the Shelter's privacy. If you want more information or to volunteer, contact EChO directly!)

November is SWAG's annual potluck and donation month. We vote on which non-profit will receive that year's donations. In December we will have SWAG's holiday party/gift exchange at a local restaurant. Stay tuned for details!

*SWAG is a fun ladies' group that focuses on learning about our community, local businesses, and non-profits as well as other interesting topics. We always begin our meetings with refreshments and socialization, followed by that month's educational topic.*

*SWAG meets the third Tuesday of each month from 1-3pm. We are always seeking new ideas, new members and new energy! If you want to join our group, please email [Activities@EvergreenNewcomers.com](mailto:Activities@EvergreenNewcomers.com). Come and make new friends!*

Photos from our Summer Hiking Group!



Genessee Mountain – August 2025



Herman Gulch  
September 2025



Staunton Park  
September 2025



Hike on Meridian Trail September 2025

## WINE GROUPS

*ENN members appreciate a good bottle of wine and enjoy the good company of fellow members! Here is a listing of the current ENN Wine Groups:*

|                      |                        |                          |
|----------------------|------------------------|--------------------------|
| Corkscrews           | Donn & Cassie Fishbein | 3rd Saturday             |
| Guzzlers             | Roger & Sheri Matz     | 3rd Saturday             |
| EverPour             | Belinda Aber           | A Thursday               |
| In Vino Veritas      | Bob Fudge              | 3rd Saturday             |
| Les Dégustateurs     | Carrie Garczynski      | 1st Saturday (alt. mos.) |
| The Screwtops        | Jen Delacruz           | 2nd Saturday             |
| SOLO Winers & Diners | Donna Lomax            | 1st Saturday             |
| Uncorked             | Ray Trevisan           | 2nd Saturday             |
| Winos                | Colette Lambert        | 3rd Saturday             |

If you are interested in joining a wine group, contact [Activities@EvergreenNewcomers.com](mailto:Activities@EvergreenNewcomers.com)

This year's ENN Ladies **Intermediate/Advanced Golf** at Evergreen Golf Course saw another beautiful season with great weather, including autumn days with fall colors.

Many thanks to Mary Ermides and Lilian Peeters for their help in reserving tee times for the group. We hope they can keep enjoying this fall weather!

On the picture to the right:  
Mary, Trish, Betty and Jane



**Literally Amazing Book Club:**

The Literally Amazing Book Club met September 18th at the Buchanan Community Gardens to discuss "James" by Percival Everett, a reexamination of the Huck Finn from the slave Jim's perspective. We met in October to discuss "The Frozen River" by Ariel Lawhon, a biographical fiction about Martha Ballard, a midwife in the late 1790's in Hallowell Maine who not only cares for women but also investigates the mysterious death of a local man, despite being considered "just a woman".

For our next meeting, we will be discussing "The Last Thing He Told Me" by Laura Dave, a mystery about a husband's disappearance.

Our **Gals' Breakfast** September event was held on Friday, September 26 at Danny Ray's Food and Spirits, 11353 W. Colfax Ave. in Lakewood. Seven ladies enjoyed a delicious breakfast and some lively conversation. Our October breakfast took place on Friday, October 31 at Jaime's Mexican Restaurant, 608 Garrison St. in Lakewood and was equally enjoyable.

*New members are invited to join us for breakfast and a fun social gathering on the last Friday of each month at varying restaurants in Evergreen and the Denver Metropolitan area.*

Yummy approved!



Rachel

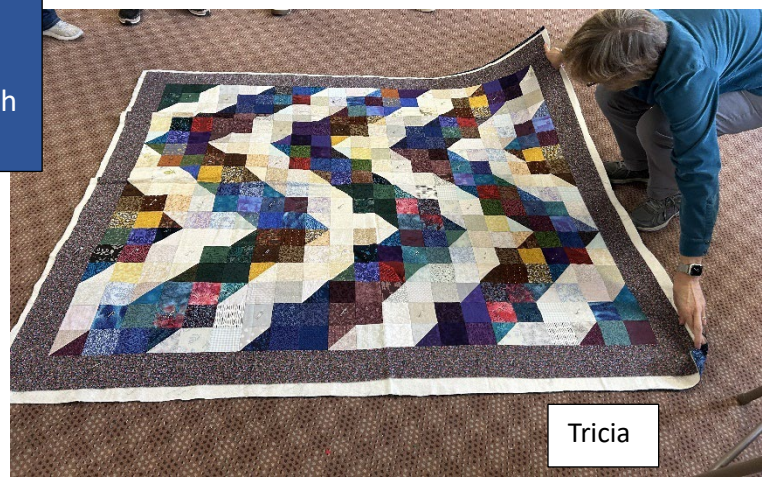
The Blue Sky Quilters are getting back in the groove now that it's fall, and quilting up a storm. Over the summer we had a few outings; once to the Castle Rock quilt show, and once to the Rocky Mountain Quilt Museum to see the Ricky Tims exhibit. Here are some of our quilts and one beautiful cross stitch from Rachel (left).



Kim



Sandy



Tricia



Gladys



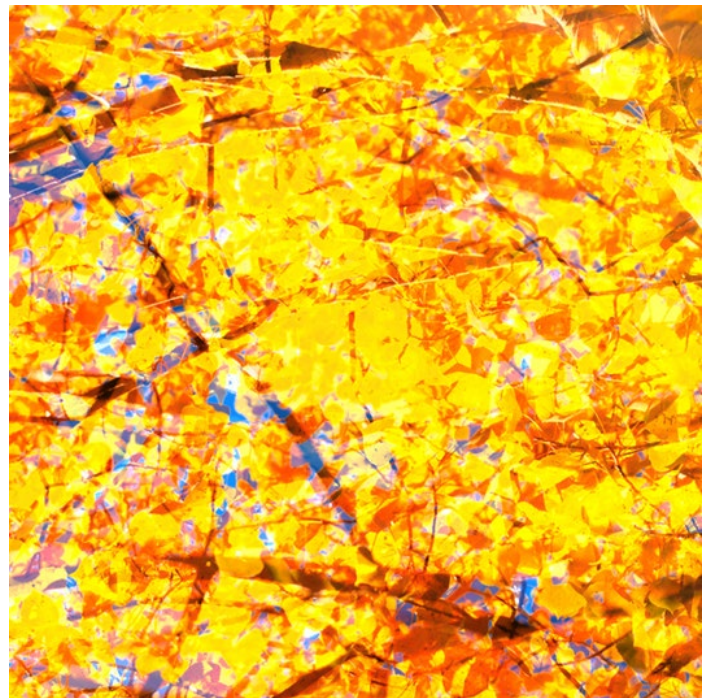
Lynn

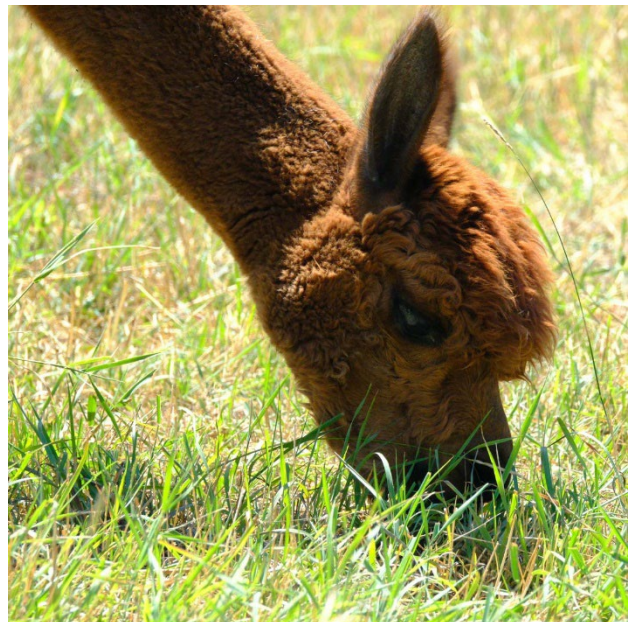


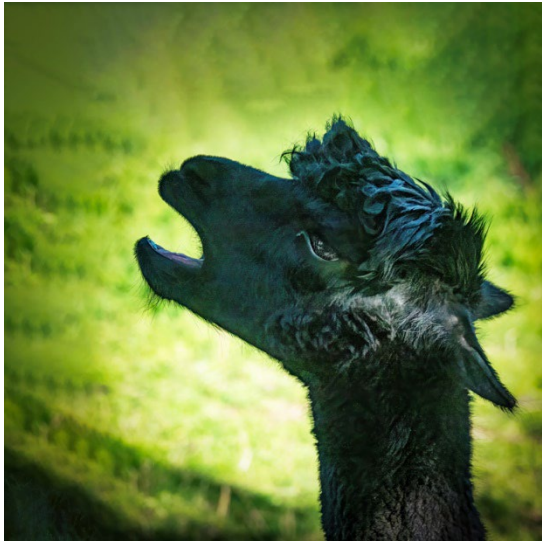
The ShutterBugs Shoot for October, 2025 was held at the Wagon Wheel Ranch. The ranch is a historical site with lots of old buildings and a colorful history. Original buildings were constructed in the late 1920's and 1930's. The ranch started life as a bordello with one of the first buildings being a rather large garage so that patrons could park their cars out of site. The ranch also served as a riding camp for underprivileged girls from the Denver area. The camp was run by the Catholic church and during that period a chapel, a large barn, corrals, and many small cabins were built. Today the ranch is privately owned, and the main ranch house has been totally remodeled. Additionally, many of the exteriors of the original buildings have been restored. Local wildlife can often be observed on the ranch. They are often mixed in with domestic animals such as horses, dogs, and alpaca. Water fowl can also be observed on the two ponds. This month's images include images from our shoot at the ranch and images taken by members traveling around Colorado during the month.











## ENN Board of Directors 2025 - 2026

### President

Mike Ferrari, [president@evergreennewcomers.com](mailto:president@evergreennewcomers.com)

### Vice President

Chris Schmenk, [vicepresident@evergreennewcomers.com](mailto:vicepresident@evergreennewcomers.com)

### Secretary

Susan Hall, [secretary@evergreennewcomers.com](mailto:secretary@evergreennewcomers.com)

### Treasurer

Janet Harting, [treasurer@evergreennewcomers.com](mailto:treasurer@evergreennewcomers.com)

### Activities

Chris Schmenk, [activities@evergreennewcomers.com](mailto:activities@evergreennewcomers.com)

### Community Involvement

Rebecca Balentine, [community@evergreennewcomers.com](mailto:community@evergreennewcomers.com)

### Events

Donna Lomax, [events@evergreennewcomers.com](mailto:events@evergreennewcomers.com)

### Hospitality

Mary Ermides, [hospitality@evergreennewcomers.com](mailto:hospitality@evergreennewcomers.com)

### Membership

Mike Harrison, [membership@evergreennewcomers.com](mailto:membership@evergreennewcomers.com)

### Newsletter

Kathrin Schroeter, [newsletter@evergreennewcomers.com](mailto:newsletter@evergreennewcomers.com)

### Nominating

Karen Davis, [nominating@evergreennewcomers.com](mailto:nominating@evergreennewcomers.com)

### Publicity

Sandy Illich, [publicity@evergreennewcomers.com](mailto:publicity@evergreennewcomers.com)

### Webmaster

Rob Wilson, [webmaster@evergreennewcomers.com](mailto:webmaster@evergreennewcomers.com)

**ENN Activity Groups: Chris Schmenk**[Activities@EvergreenNewcomers.com](mailto:Activities@EvergreenNewcomers.com)

To contact any group leader, send email to [Activities@Evergreennewcomers.com](mailto:Activities@Evergreennewcomers.com).  
You will receive a direct response from the leader.

| <b>ENN ACTIVITY GROUPS</b>         |                                |  |
|------------------------------------|--------------------------------|--|
| <b>Activity</b>                    | <b>Leaders</b>                 | <b>Schedule</b>  |
| <b>14er Mountaineering</b>         | Rob Wilson                     | Various Saturdays  |
| <b>4 X 4</b>                       | Bob Ogden & Tony Oliver        | Various Sat.'s & occasional mid-week day trips; long wknd trips (Seasonal) |
| <b>Blue Sky Quilters</b>           | Sandy Illich                   | 2nd & 4th Monday, 9 AM   |
| <b>Bowling</b>                     | Lisa Morton                    | 1st Tuesday, 6:30 PM   |
| <b>Bridge Evening</b>              | Jean Wells & Joanne Hill       | 3rd Friday Evening   |
| <b>Canasta</b>                     | Donna Lomax                    | 2nd & 4th Wednesday, 1-3:30 PM   |
| <b>Easy Walkers</b>                |                                | 2nd Wednesday, 9 AM  |
| <b>Euchre</b>                      | Chris Schmenk                  | Thursday of choice, 6:30 – 9 PM  |
| <b>Gals' Breakfast</b>             | Louise Whiteside               | Last Friday, 10 AM   |
| <b>Guys' Breakfast</b>             | Kevin Kerr                     | 2nd Tuesday, 8:30 AM   |
| <b>Happy Hour</b>                  |                                | 3rd Tuesday, 4 – 6 PM  |
| <b>Ladies Golf</b>                 | Katy Lynch                     | Wednesday (seasonal)   |
| <b>Lend-A-Book</b>                 | Lisa Everett                   | 3rd Monday, 10 AM  |
| <b>Literally Amazing Book Club</b> | Jan Cryns                      | 3rd Thursday, 1 PM   |
| <b>Mah Jongg (daytime)</b>         | Mindy Nitkin                   | Fridays, 10 AM - Noon  |
| <b>Mah Jongg (evening)</b>         | Simone Simpson                 | Mondays, 6:30 PM   |
| <b>Mellow Hikers - Weekday</b>     | Mary and Phil Hudson           | 4th Thursday, 5:30 PM  |
| <b>Mellow Hikers – Weekend</b>     | Jen Delacruz                   | 2nd Saturday, 9 AM   |
| <b>Mexican Train</b>               | Lori Chaikin                   | 1st and 3rd Wed., 1-3:30 pm  |
| <b>Motorcycles</b>                 | John Griggs                    | Various Saturdays (seasonal)   |
| <b>Needlework</b>                  | Sheri Matz                     | 1st Monday, 10 AM  |
| <b>Nonfiction Book Club</b>        | Lora Mazza                     | 1st Wednesday, 7 PM  |
| <b>Poker Night</b>                 | Rose and John Warren           | Fridays, Monthly   |
| <b>Shutterbugs</b>                 | Marko Ginsberg                 | 1st & 3rd Friday Mornings  |
| <b>Ski Group (EPIC)</b>            | Rob Wilson                     | Thursdays (Seasonal)   |
| <b>Ski Group (IKON)</b>            | Pam Talley                     | Tuesdays (Seasonal)  |
| <b>Ski Group (Loveland)</b>        | Hap Bruce                      | Mondays (Seasonal)   |
| <b>Sporting Clays</b>              | Alan Palestine                 | 3rd or 4th Tuesday   |
| <b>Summer Hiking Group (SHG)</b>   |                                | Thursday Mornings; May-October   |
| <b>SWAG (Savvy Women and Gals)</b> | Marilyn Innerfeld, Barb Conroy | 3rd Tuesday, 1 PM - 3 PM   |
| <b>Wine Groups (9)</b>             | See listing on page 23         | 1st, 2nd, & 3rd Saturdays  |

*Current ENN Membership is required for participation in any activity.*